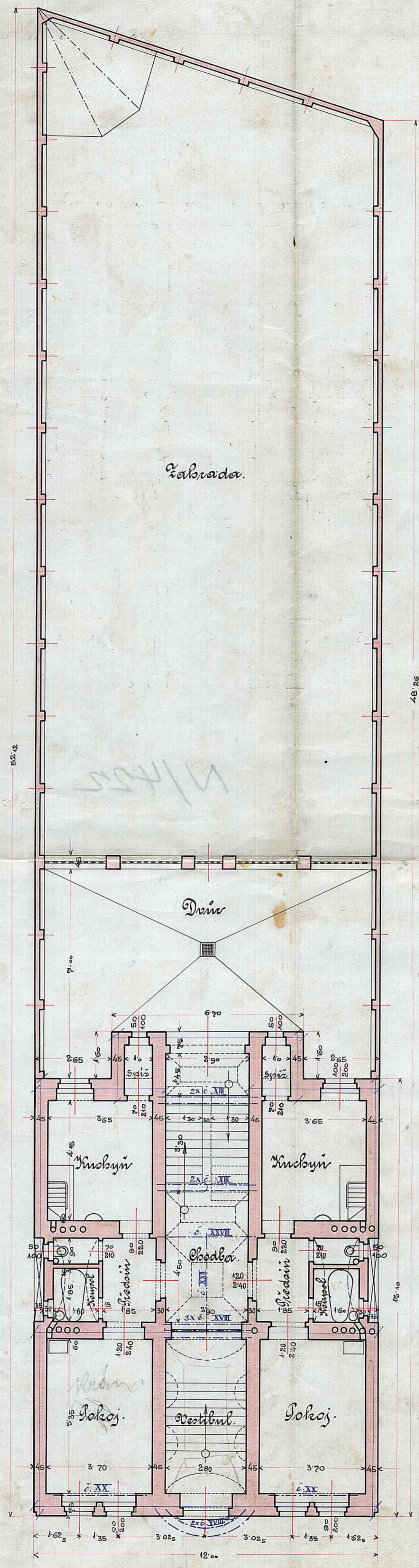


Sitnica 1:720

Viškar plošč.

Cela parcela s kat. 40 meri 602,28m<sup>2</sup>  
Od tega pripada:  
na razstavljeno ploščo domem 191,92m<sup>2</sup>  
na dvori 73,28.  
na zahradku 337,08.  
Ubinem kotežni plošča 602,28m<sup>2</sup>  
ješt tudi ne razstaveno 210,36m<sup>2</sup> = 68,1%.



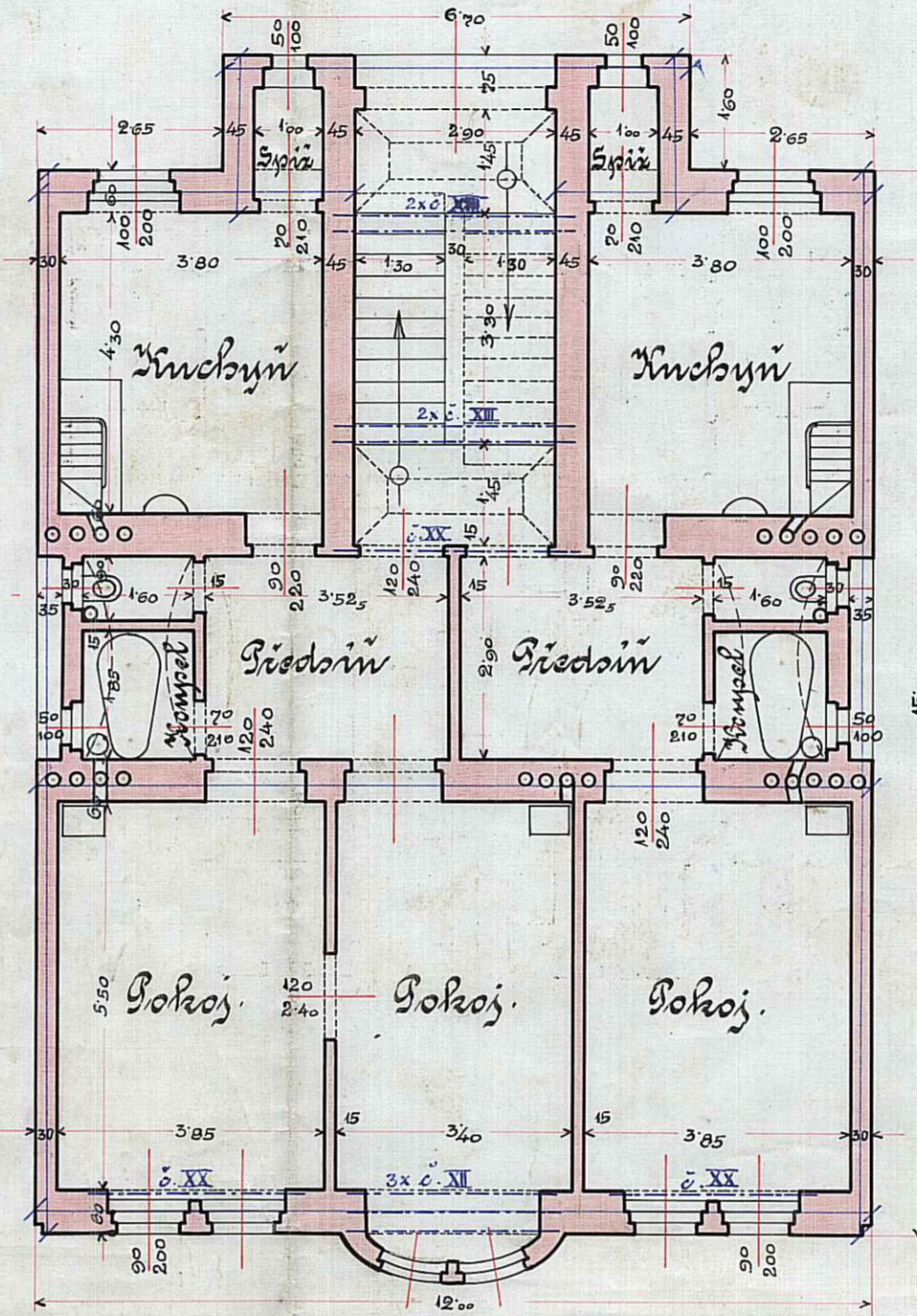
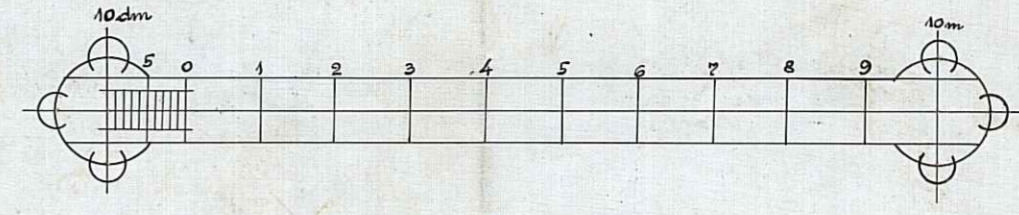
Zahrada.

Prizemje.

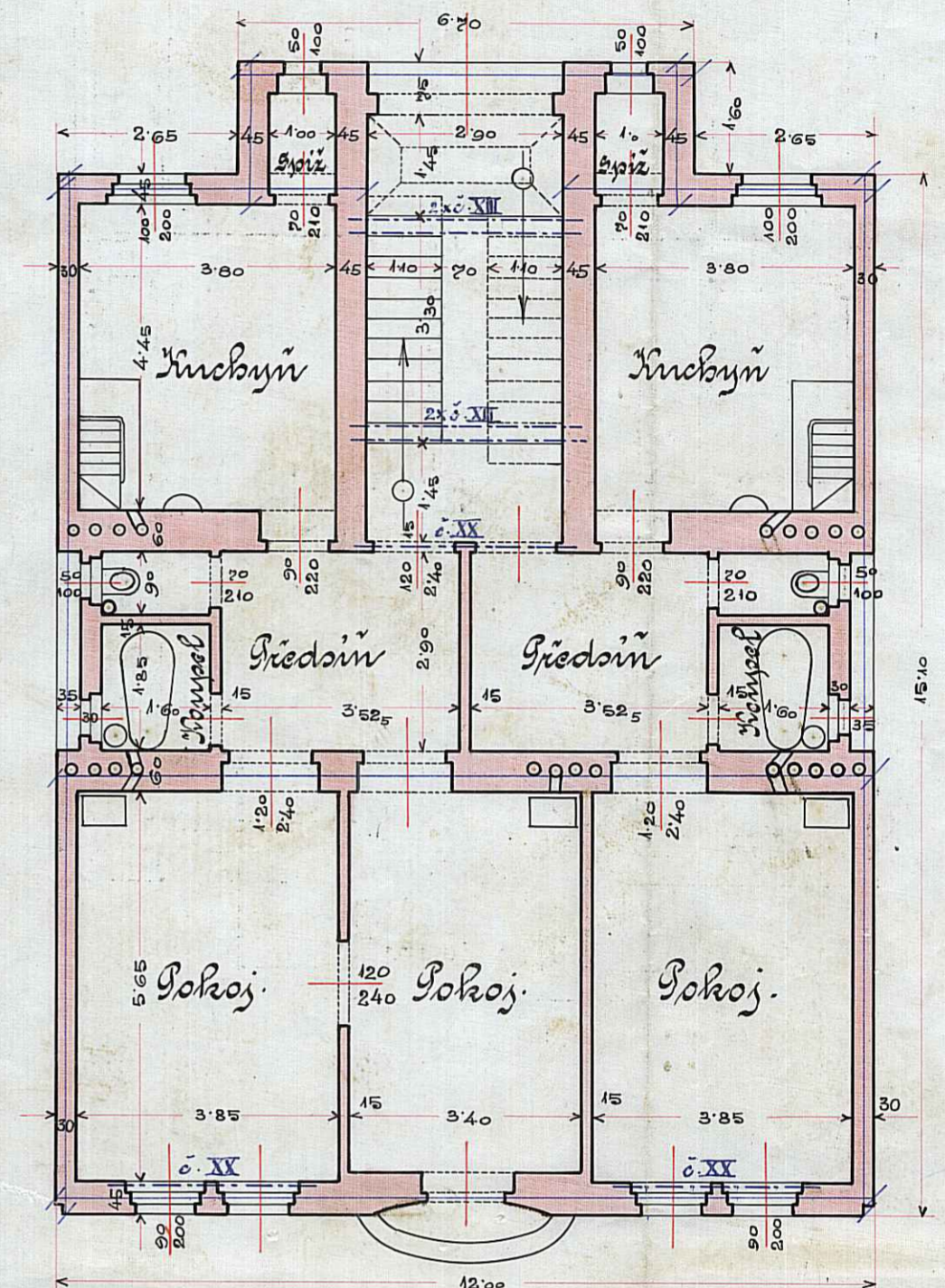
# Plan

na postavitvi novega tripartitvega domu na posesti čisto kat. 40  
v Dvorišk.

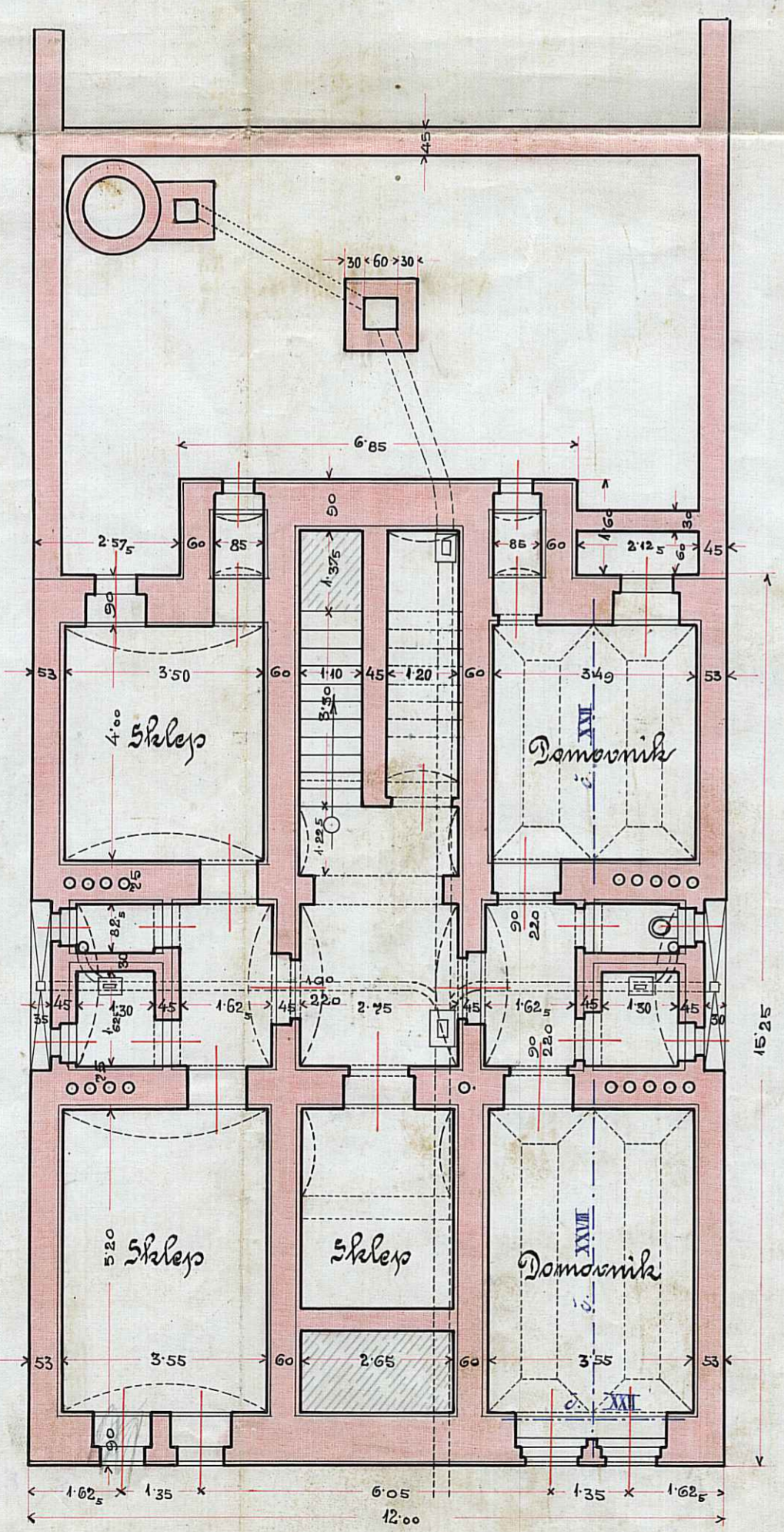
1:100.



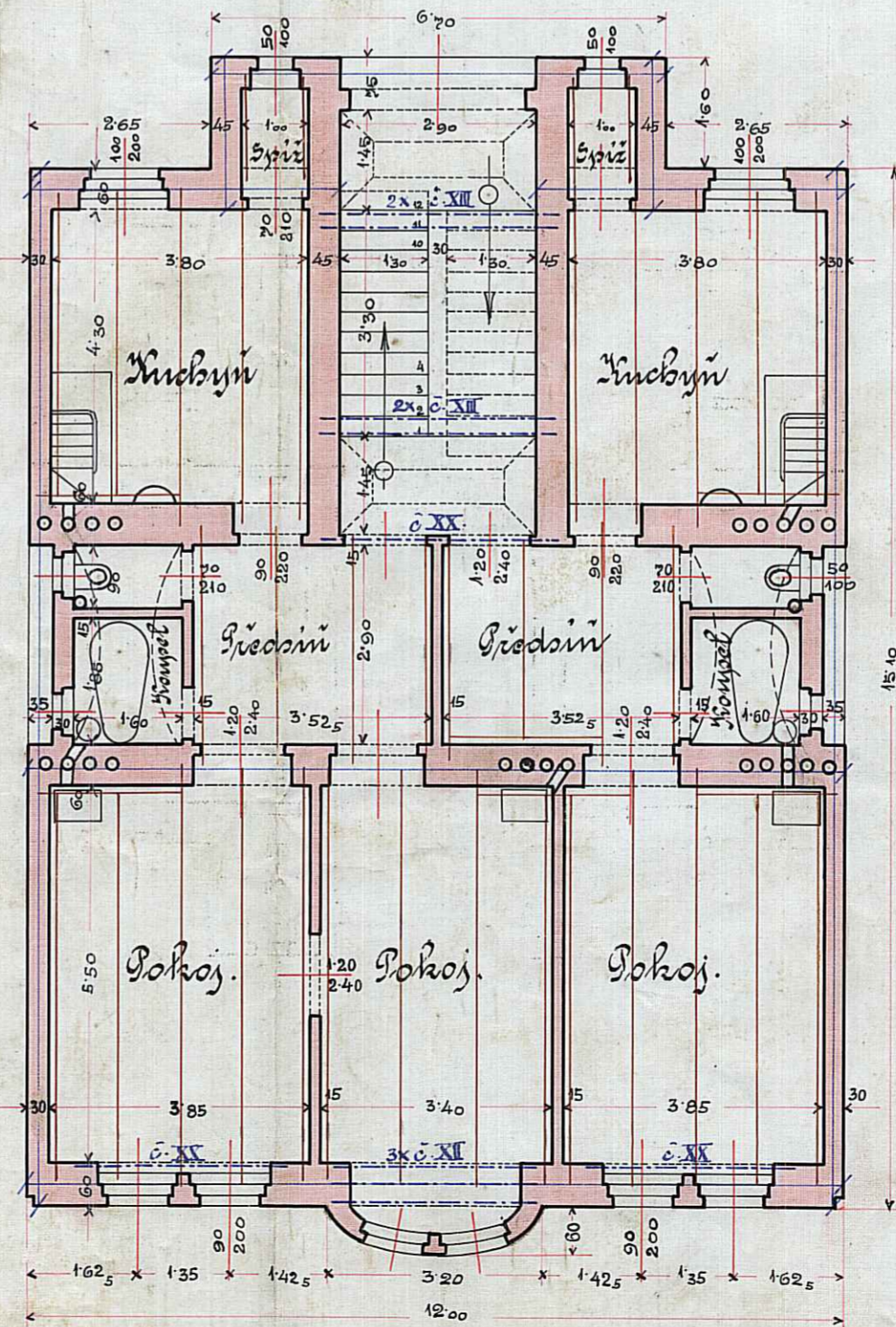
II. patro.



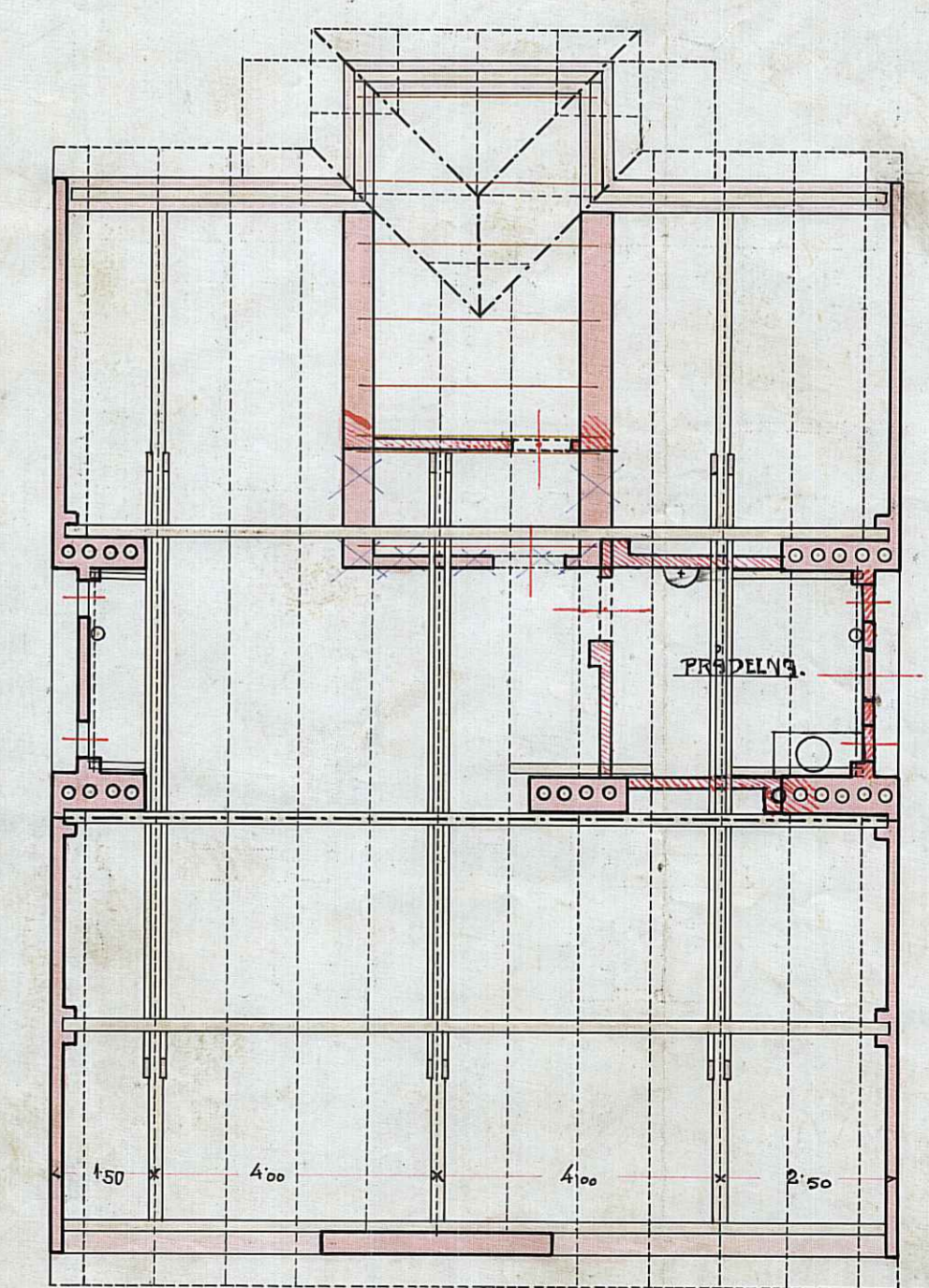
III. patro.



Sonterain.



I. patro.



KARL HANNAUER, arhitekt.

Varba.

*Karl Hannauer*

*Matej Hojnik*  
Paulina Blazich