


Příloha č.1 k prohlášení vlastníka domu č.p.995 na jednotky

ČÍSLO POPISNÉ: 995

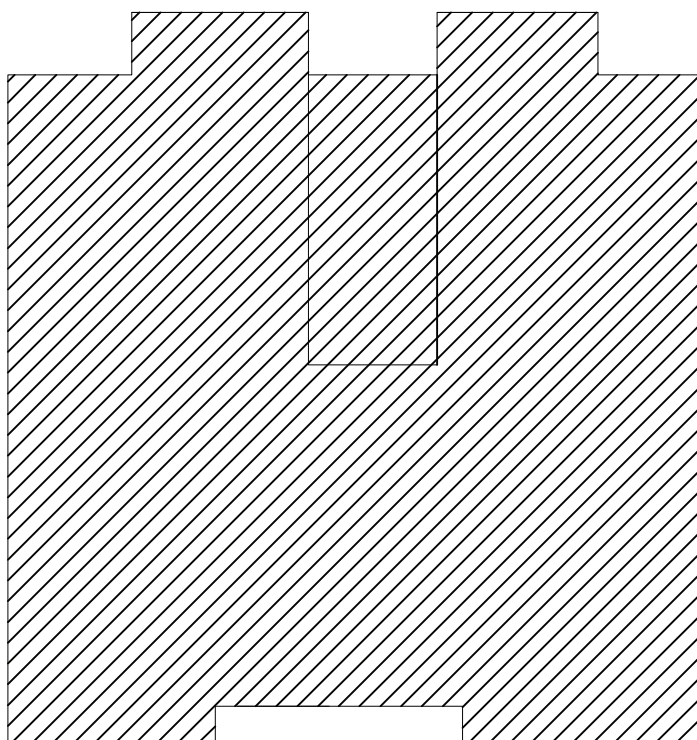
ULICE: SLOVINSKÁ

KAT.ÚZEMÍ: VRŠOVICE

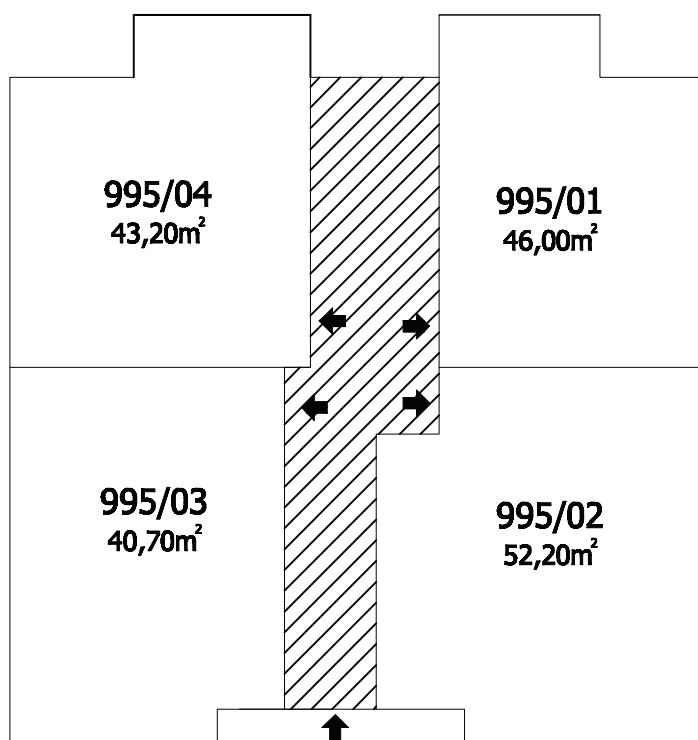
OBEC: PRAHA 10

	- BYTOVÉ JEDNOTKY
	- SPOLEČNÉ PROSTORY
	- BEZPODLAHOVÉ PLOCHY
	- NEBYTOVÝ PROSTOR
	- BALKONY, TERASY

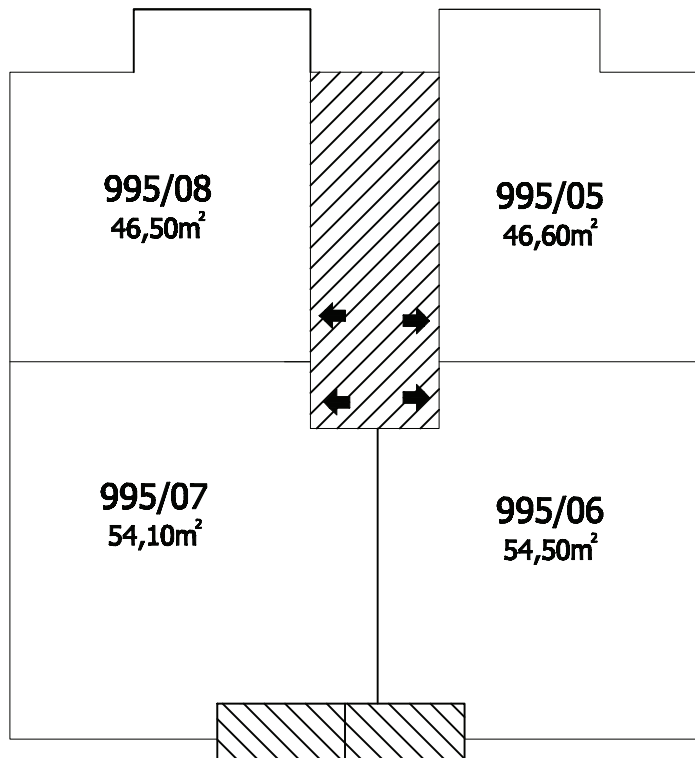
**1.P.P.
Slovinská 18**



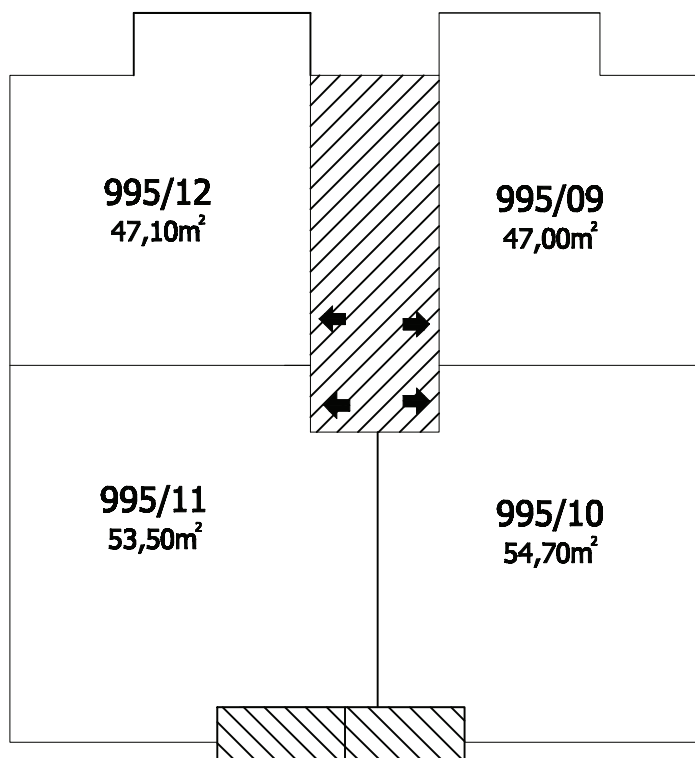
**1.N.P.
Slovinská 18**



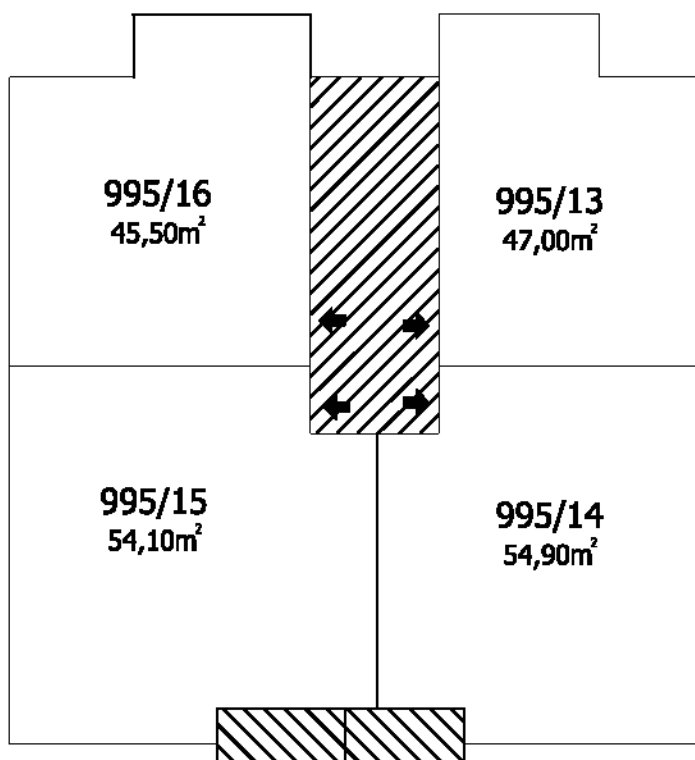
2.N.P.
Slovinská 18



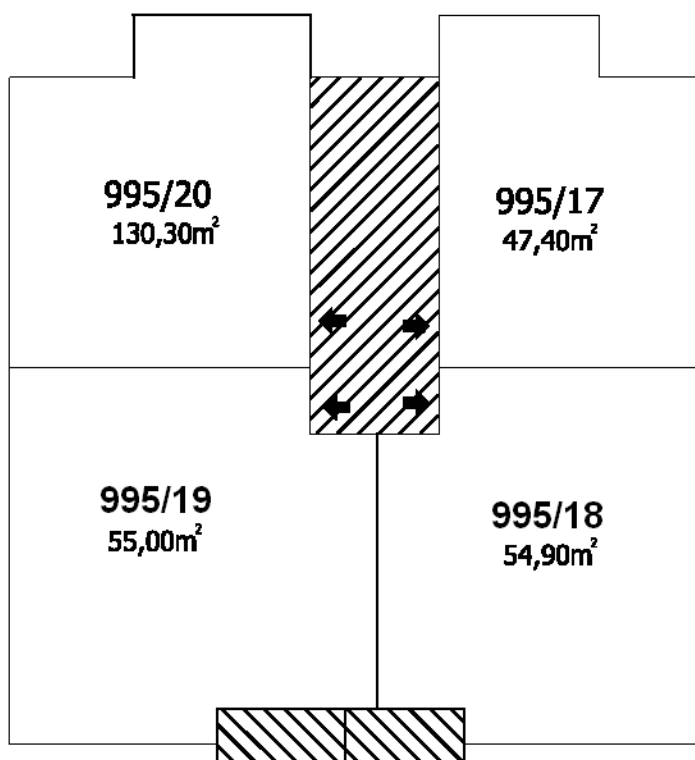
3.N.P.
Slovinská 18



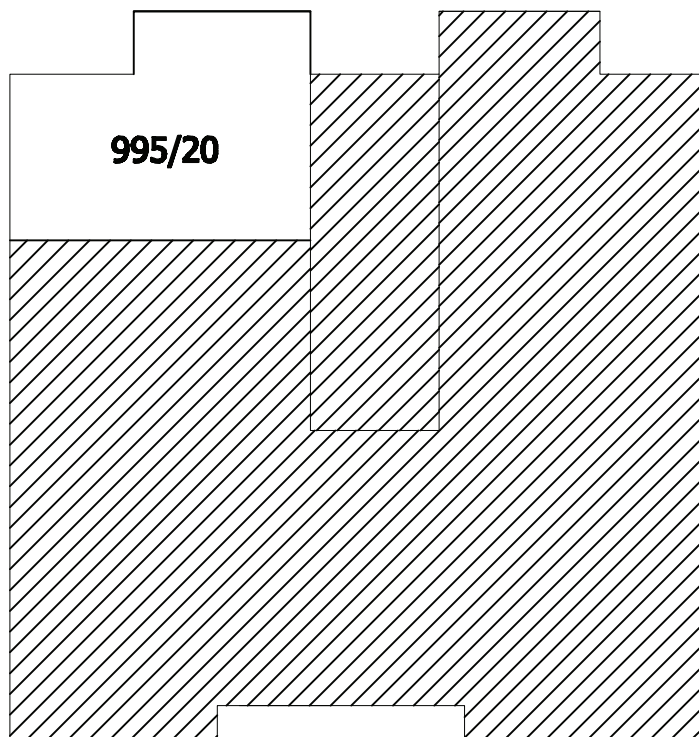
**4.N.P.
Slovinská 18**



**5.N.P.
Slovinská 18**



6.N.P.
Slovinská 18



7.N.P.
Slovinská 18

