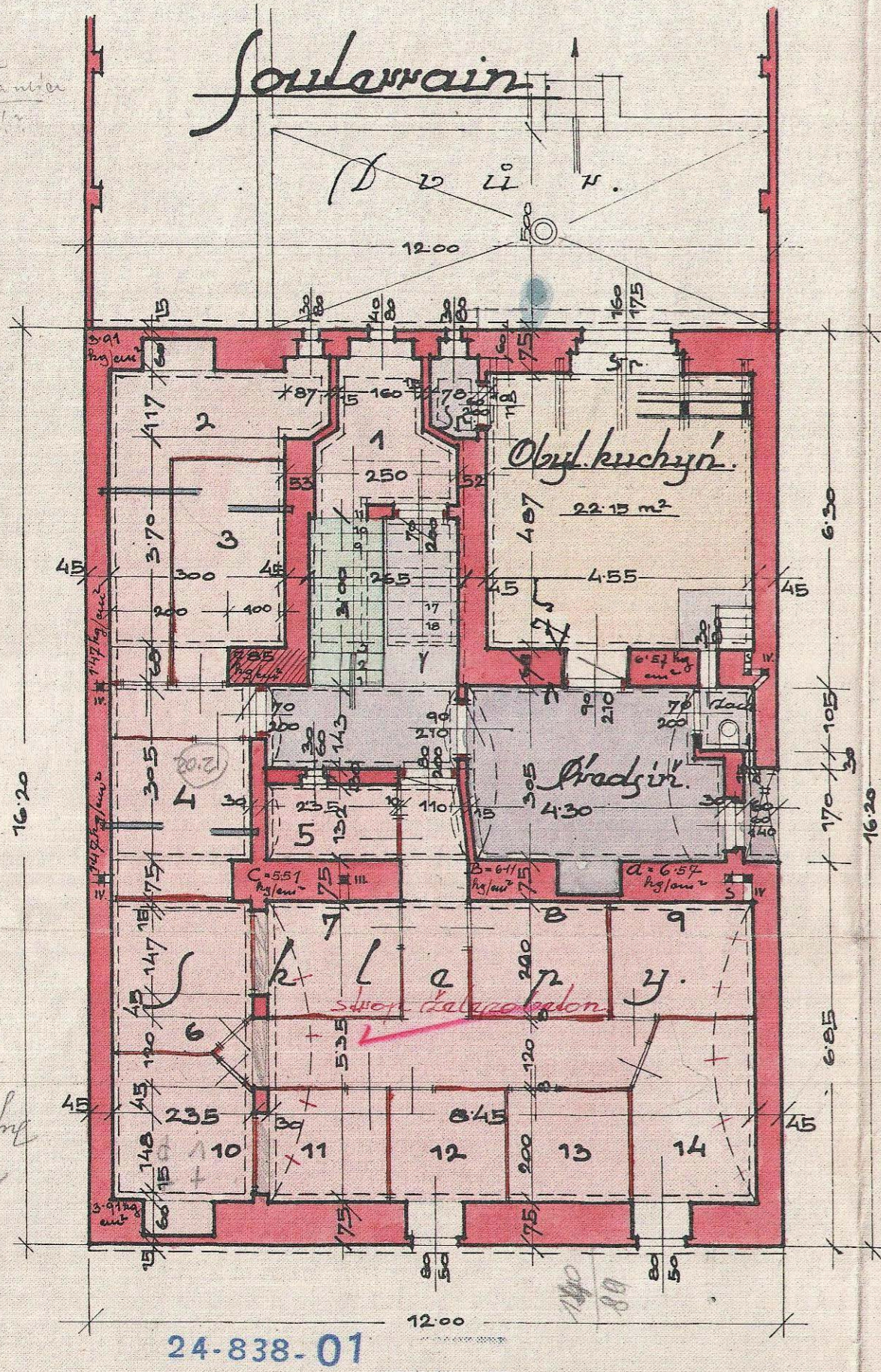


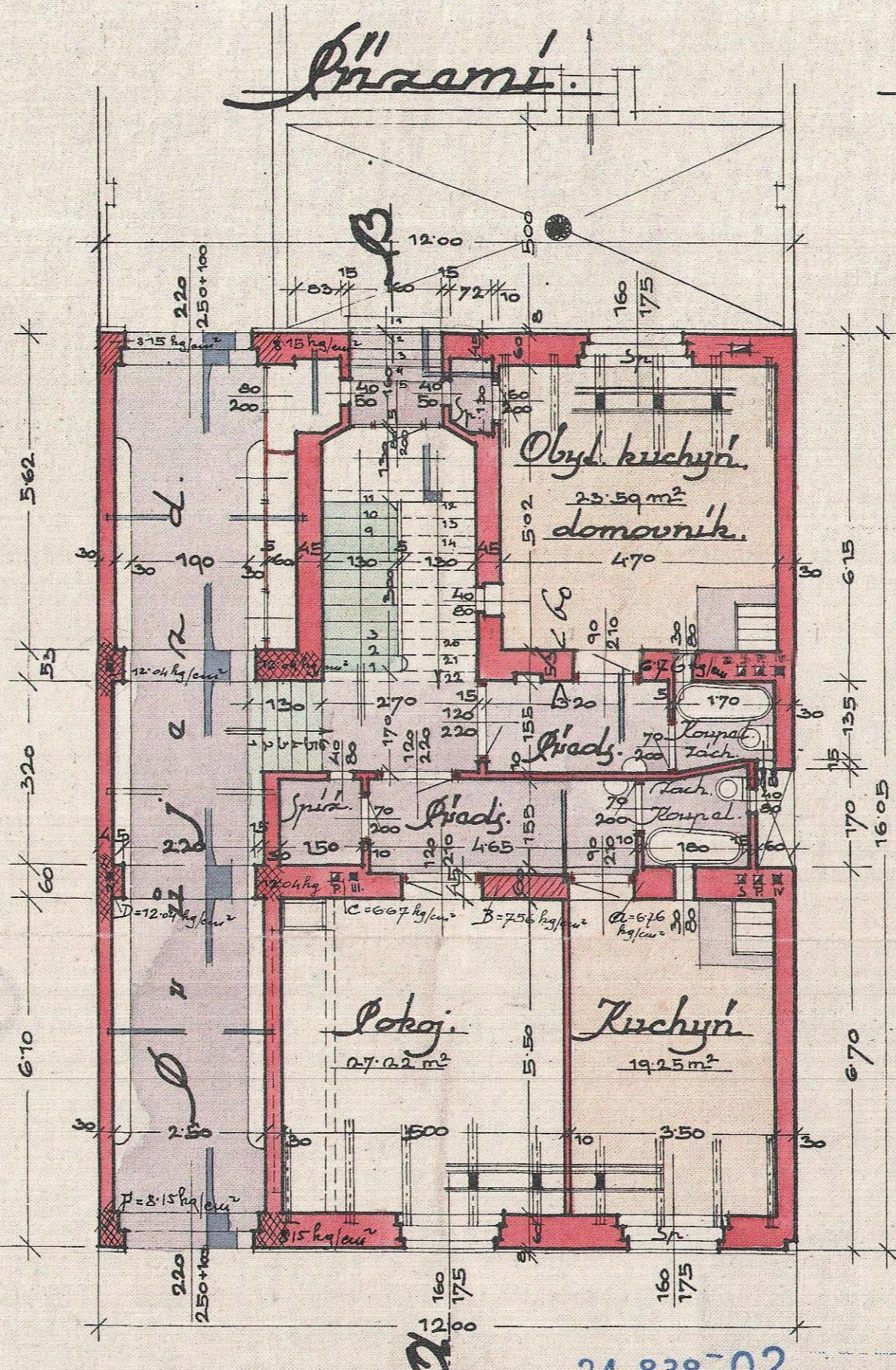
# Plan na stavbu třípatrového činž. domu pro pp. manžela štěpána Kadlce a manželky, na parc. č. 345/12 v Praze - Strašnicích.

1. patro  
2. patro  
3. patro  
podkroví



24-838-01

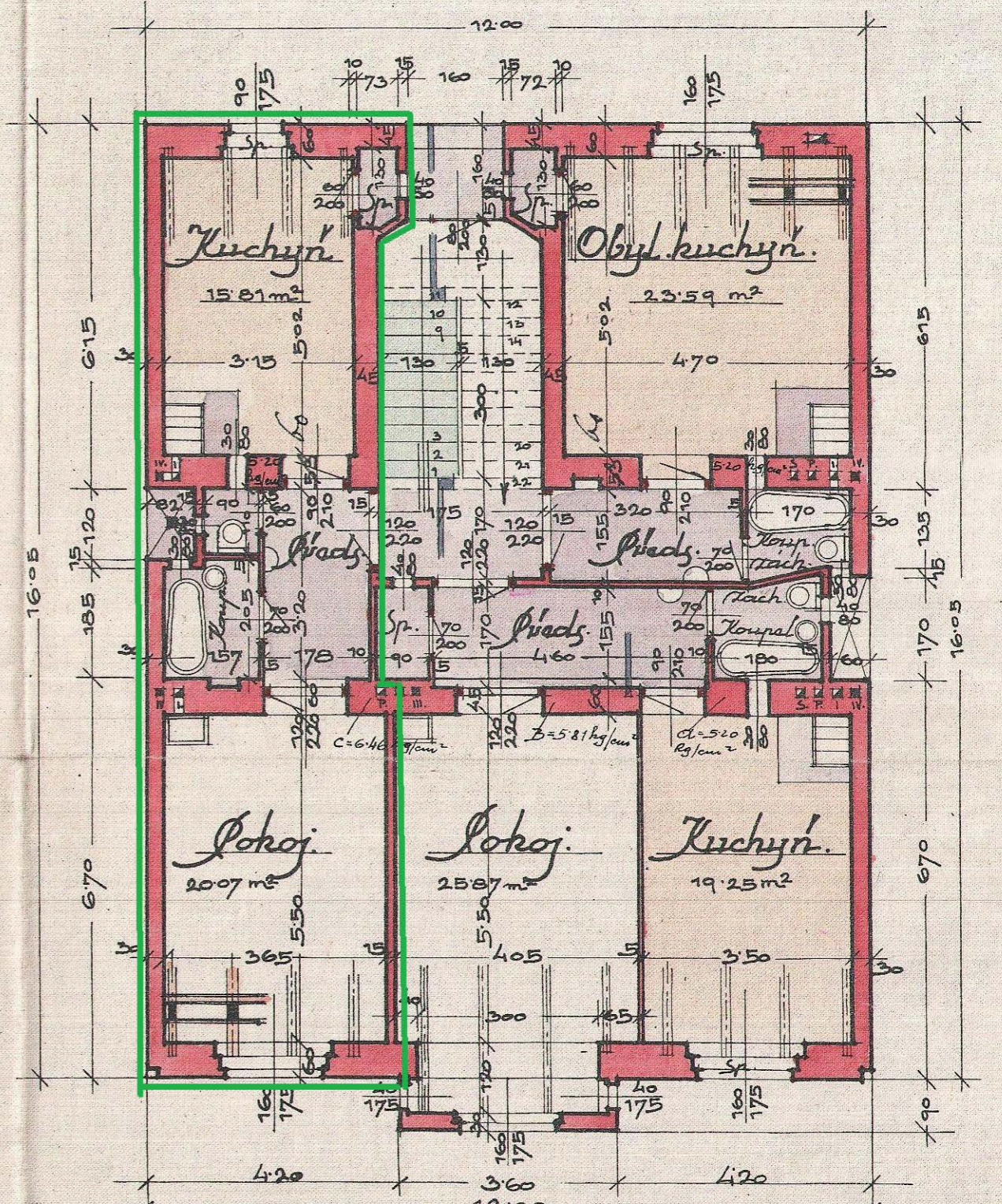
2. patro.



24-838-02

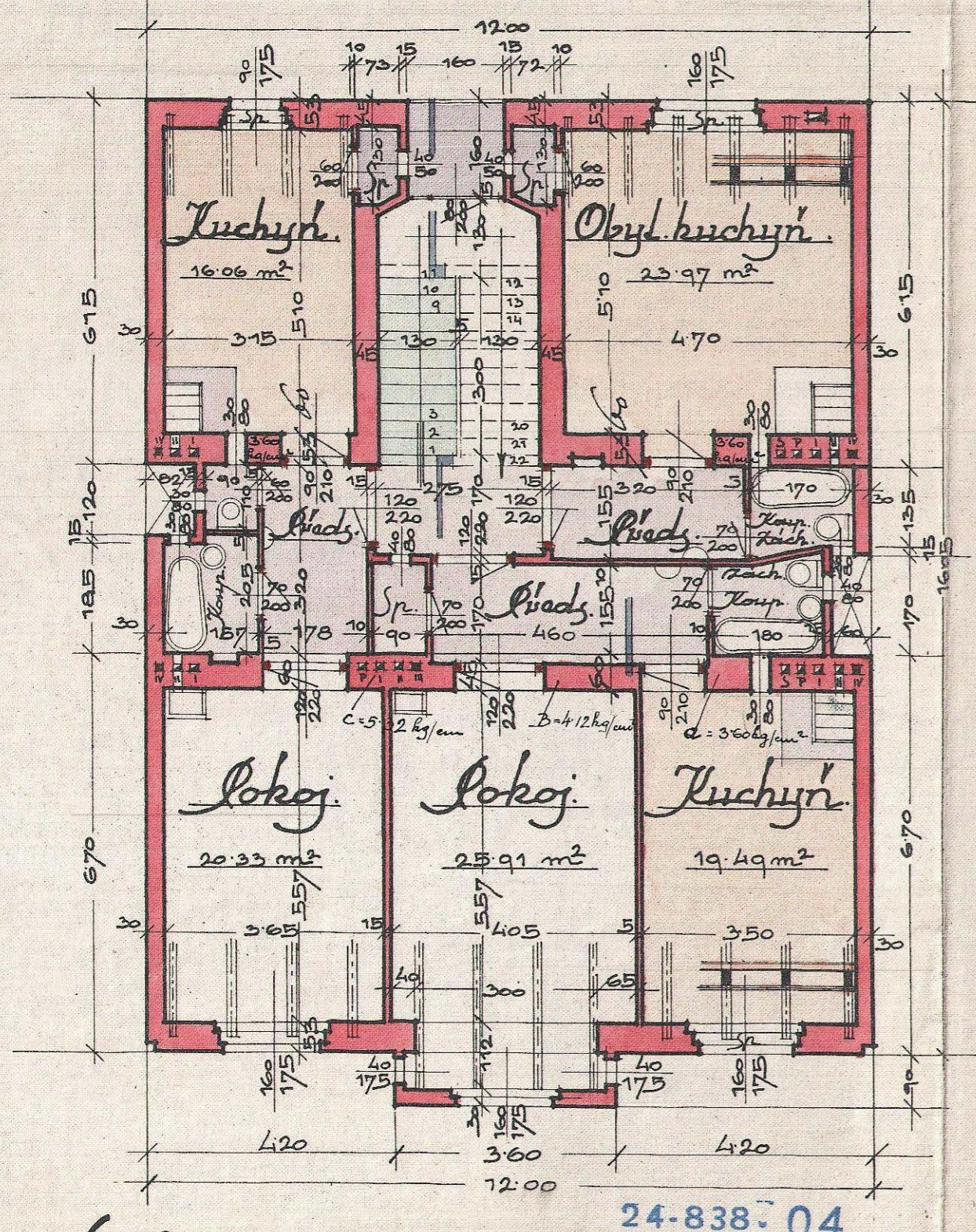
3. patro.

## v Praze - Strašnicích. 1. patro.

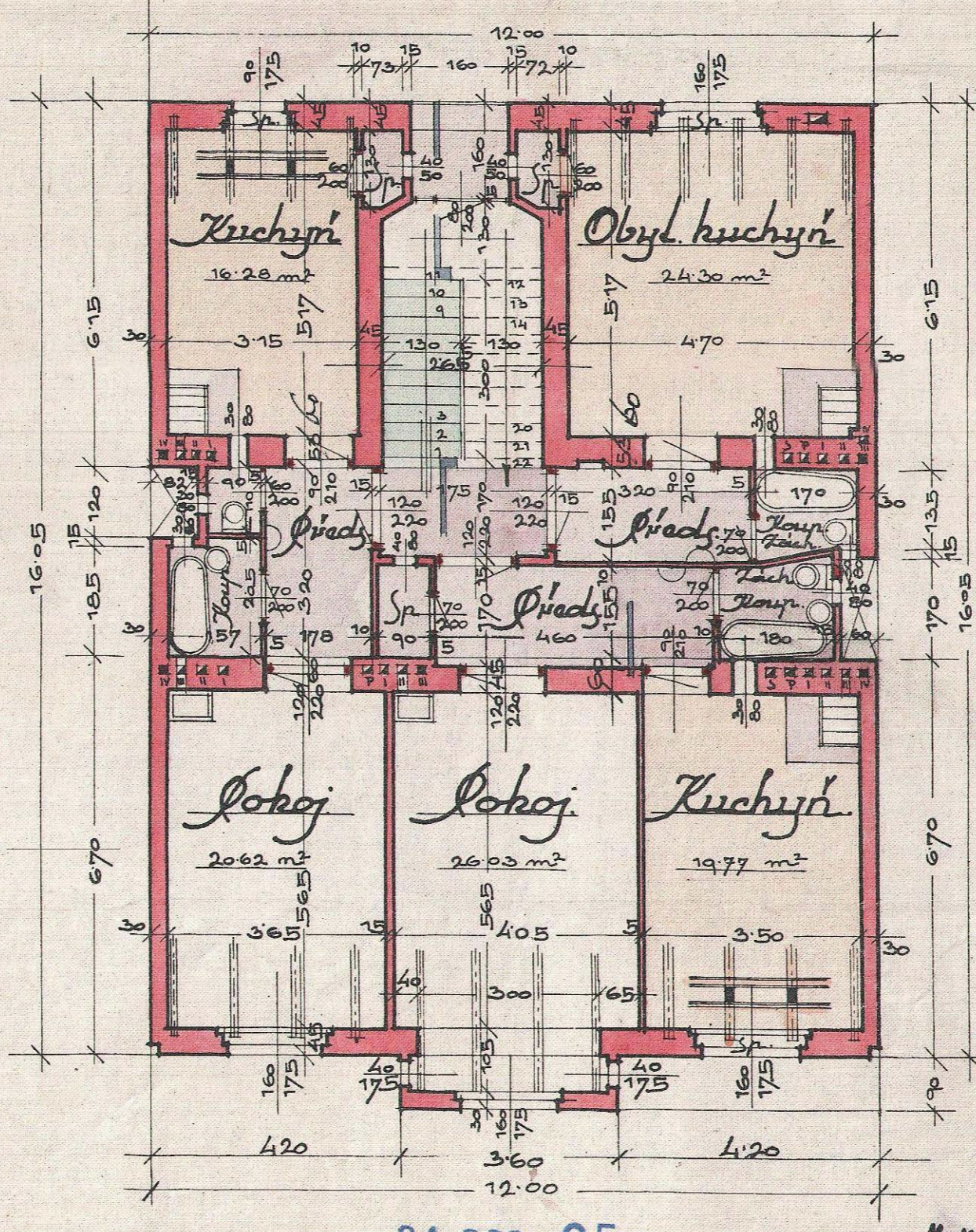


24-838-03

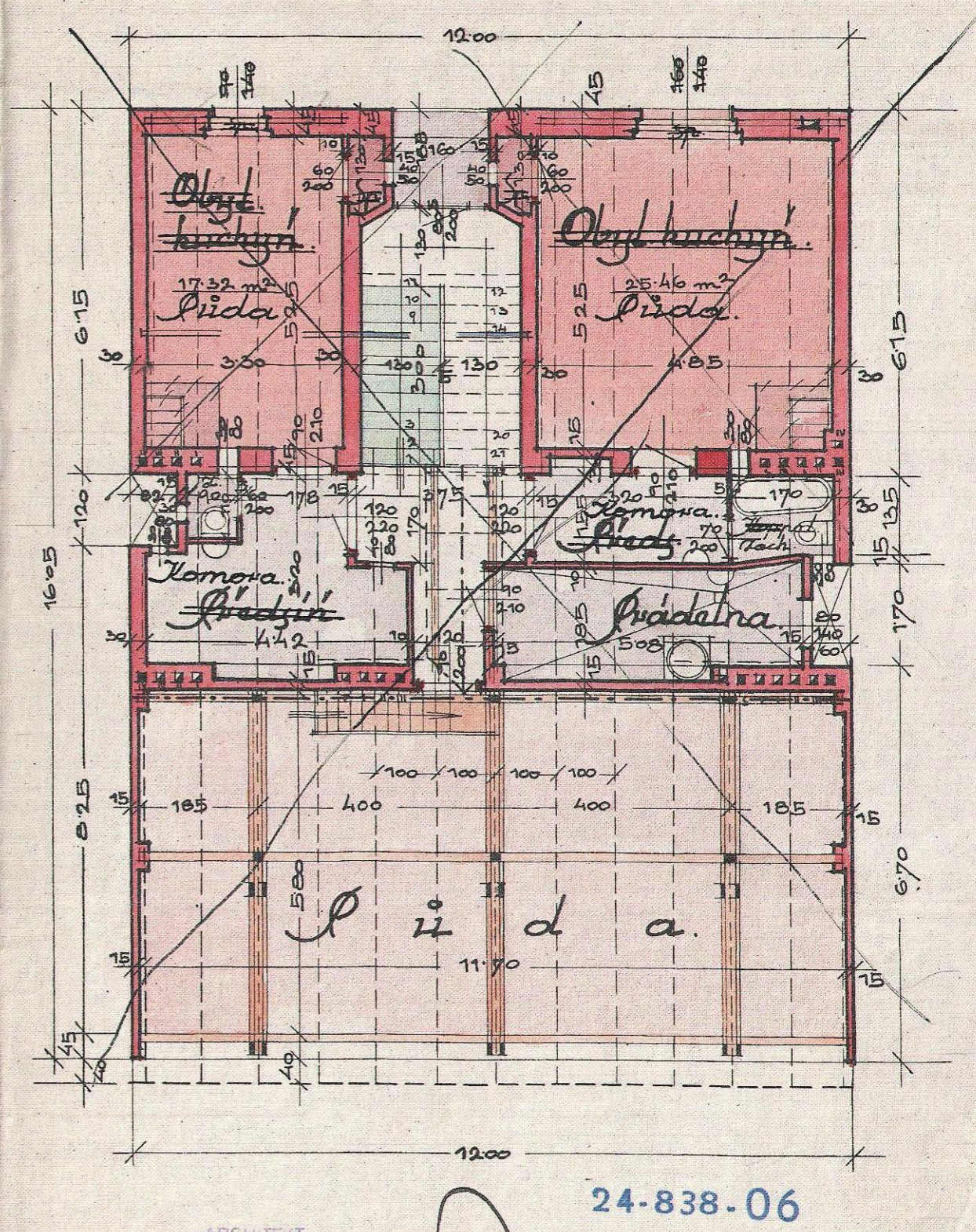
Podkroví.



24-838-04



24-838-05



24-838-06

Praha - Vinohrady v roce 1928.

Měr. 1:100.

ARCHITECT  
STĚPÁN KADLEC,  
STAVITEL  
PRAHA-VINOHRADEY,  
MORAVSKÁ 60.

František Kadlec  
stavitel

František Kadlecovský