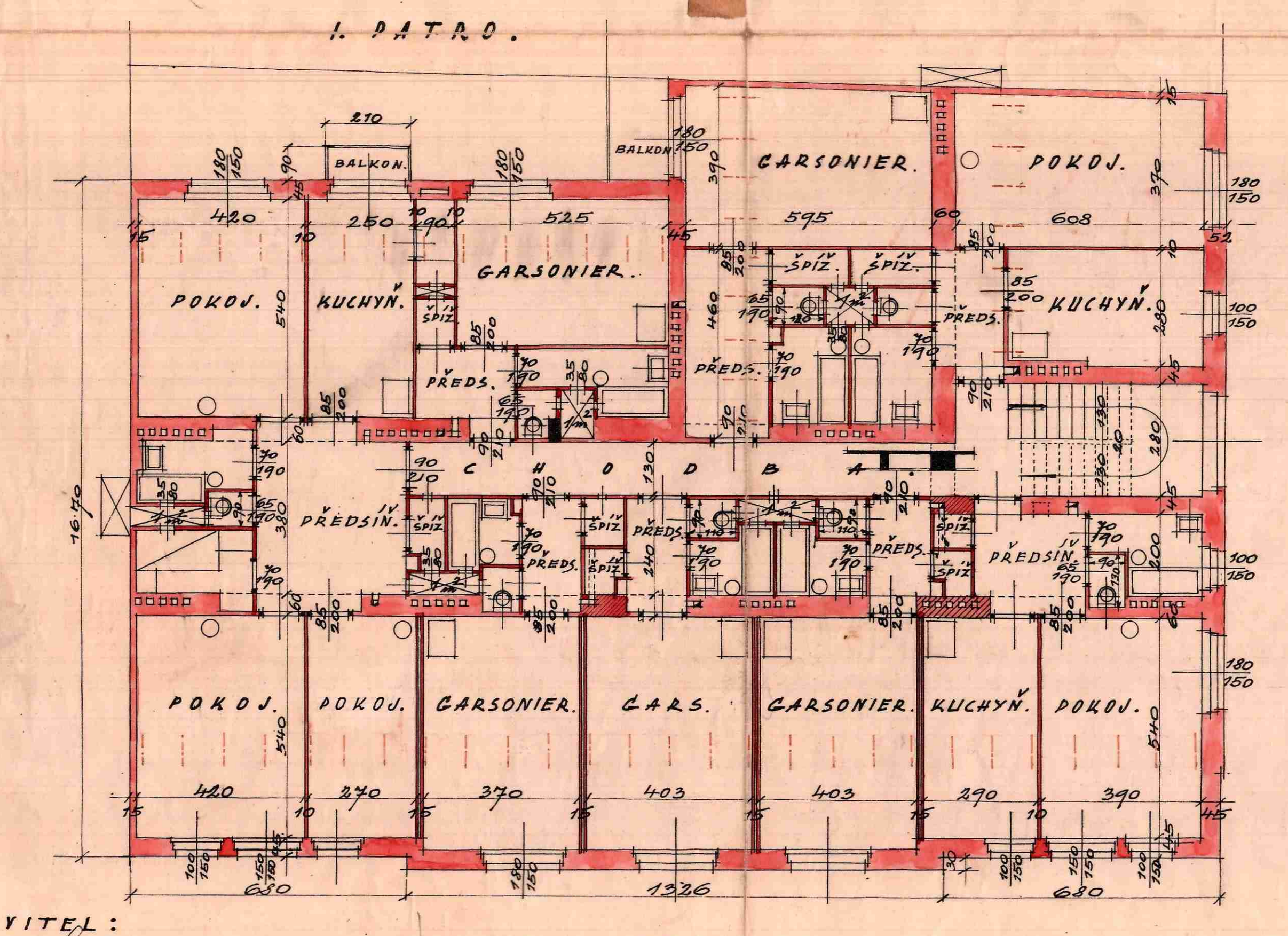
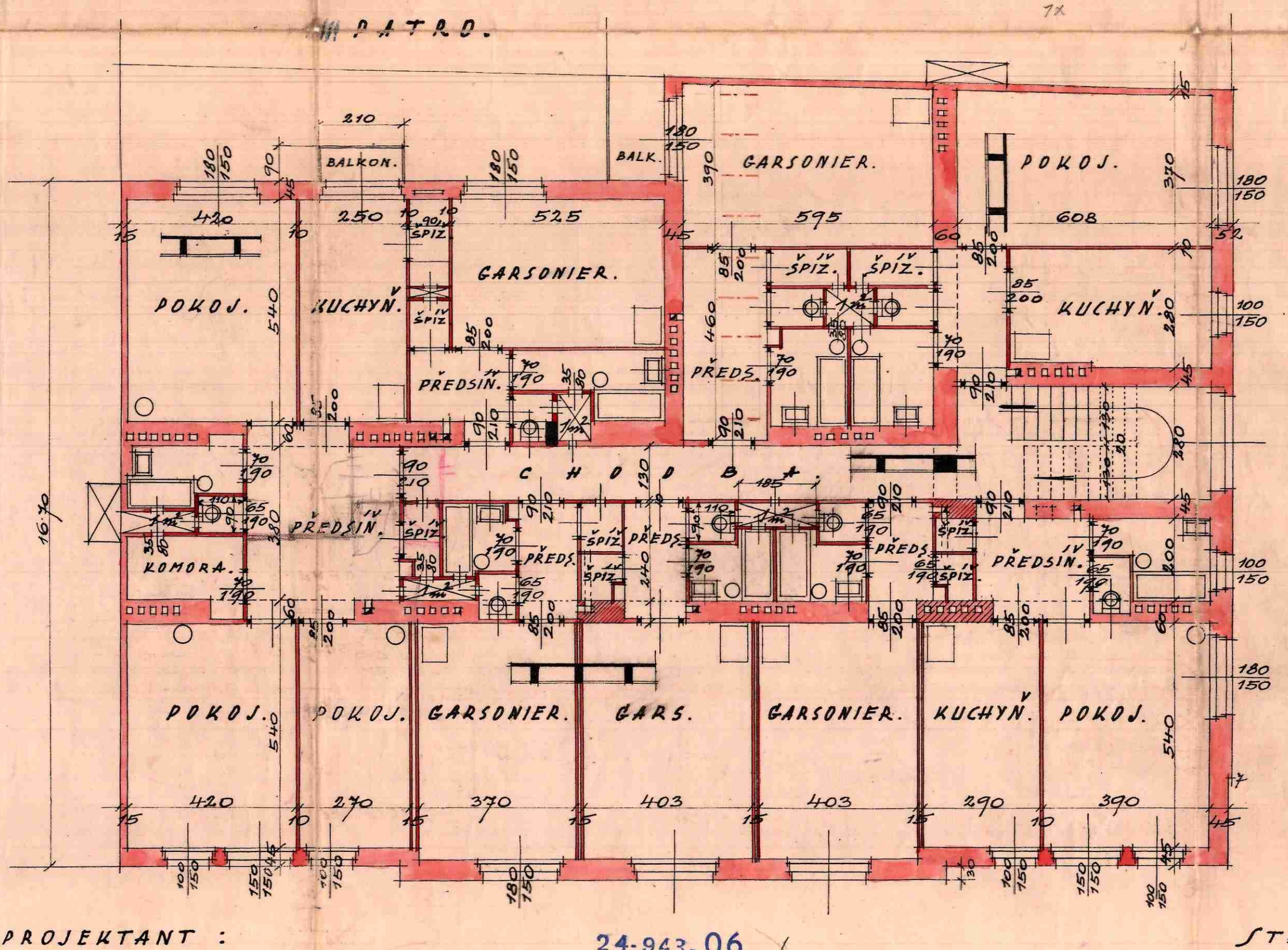
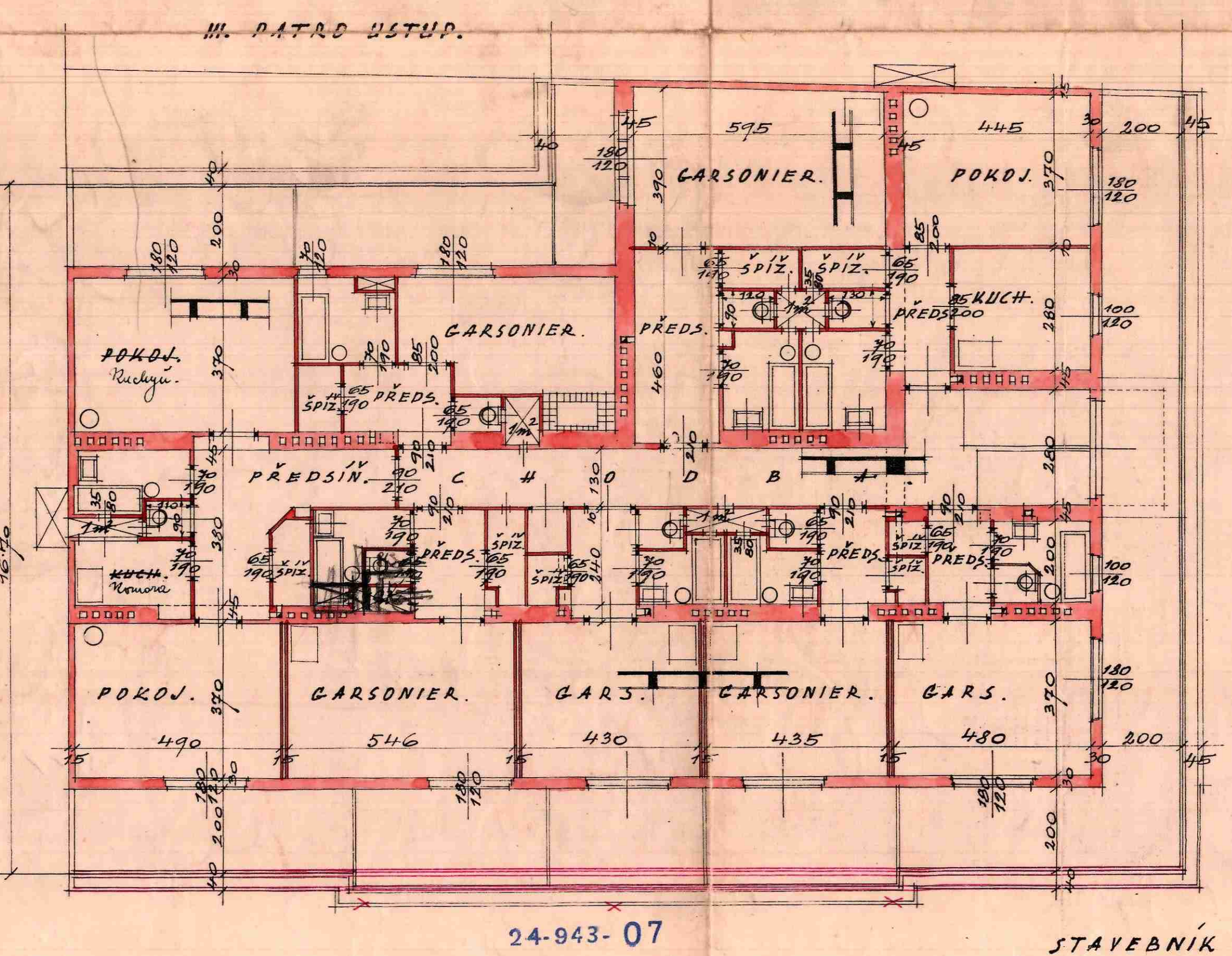
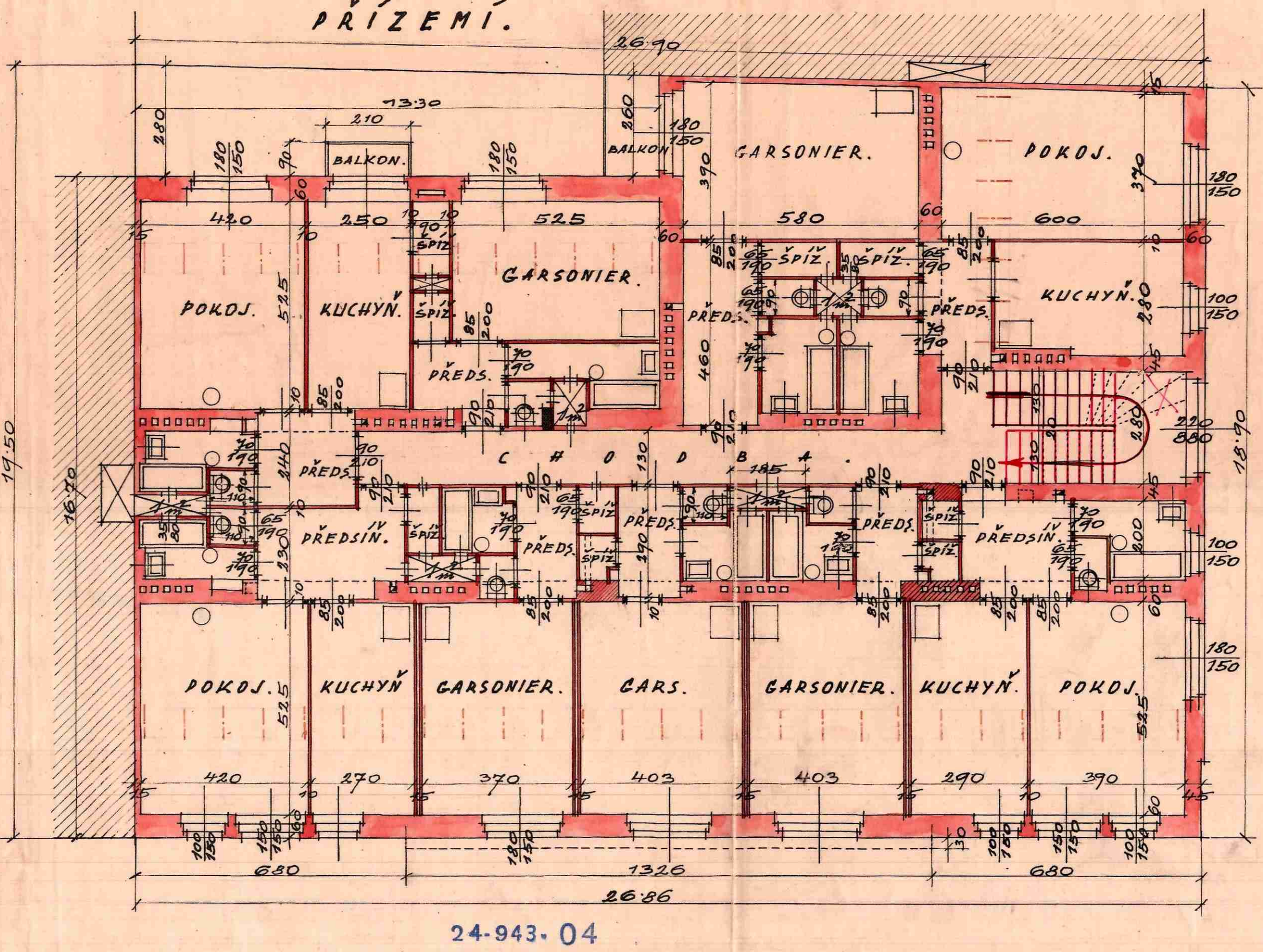
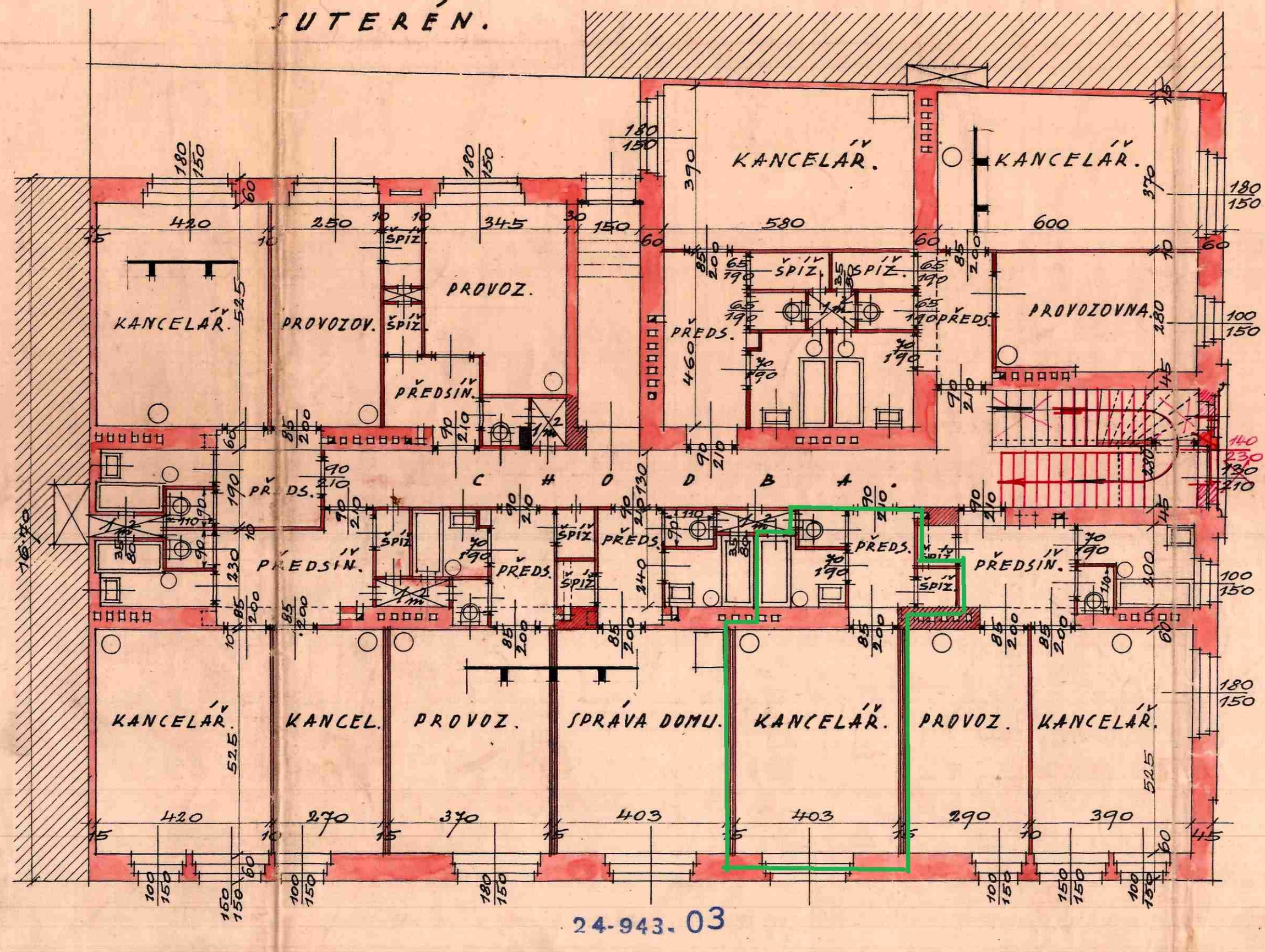
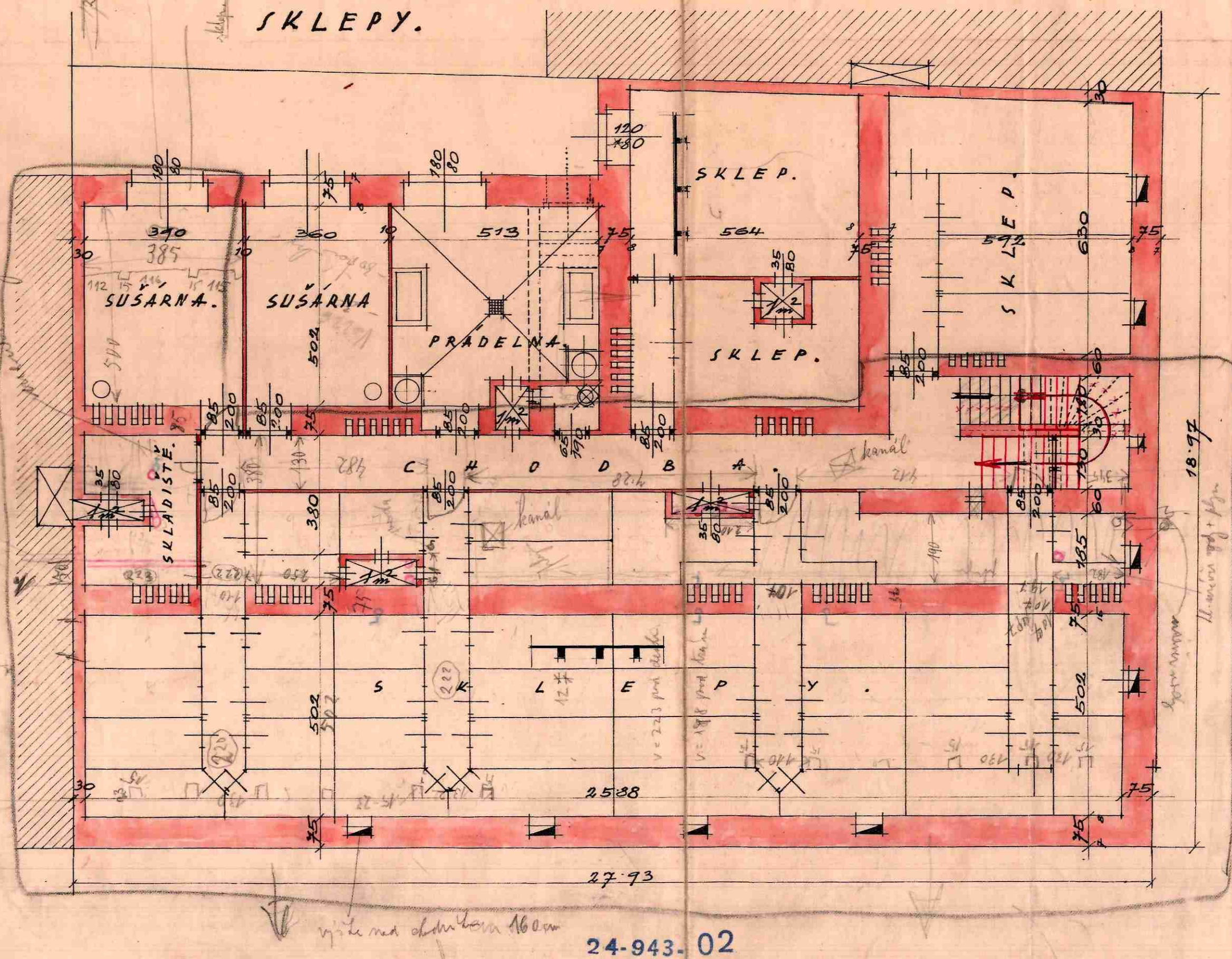


PLÁN NA STAVBU ČINŽOVNÍHO DOMU NA POZEMKU Č.K. 72/3 VE STRAŠNICÍCH.

MÉR. 1:100.



STAVEBNÍK A PROJEKTANT :
ARCH. STAN. KYSELA

STAVITEL :
Liska M. plavíček
Strašnice č. 964.

STAVEBNÍ KANCELÁŘ.
ST. KYSELA podnikatelství stavební
PRAHA-STRÁŠNICE CP 194