

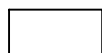
# Příloha č.1 k prohlášení vlastníka domu č.p. 112 na jednotky

**ČÍSLO POPISNÉ: 112**

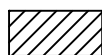
**ULICE: KRYMSKÁ**

**KAT.ÚZEMÍ: VRŠOVICE**

**OBEC: PRAHA 10**



- BYTOVÉ JEDNOTKY



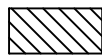
- SPOLEČNÉ PROSTORY



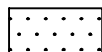
- BEZPODLAHOVÉ PLOCHY



- NEBYTOVÝ PROSTOR

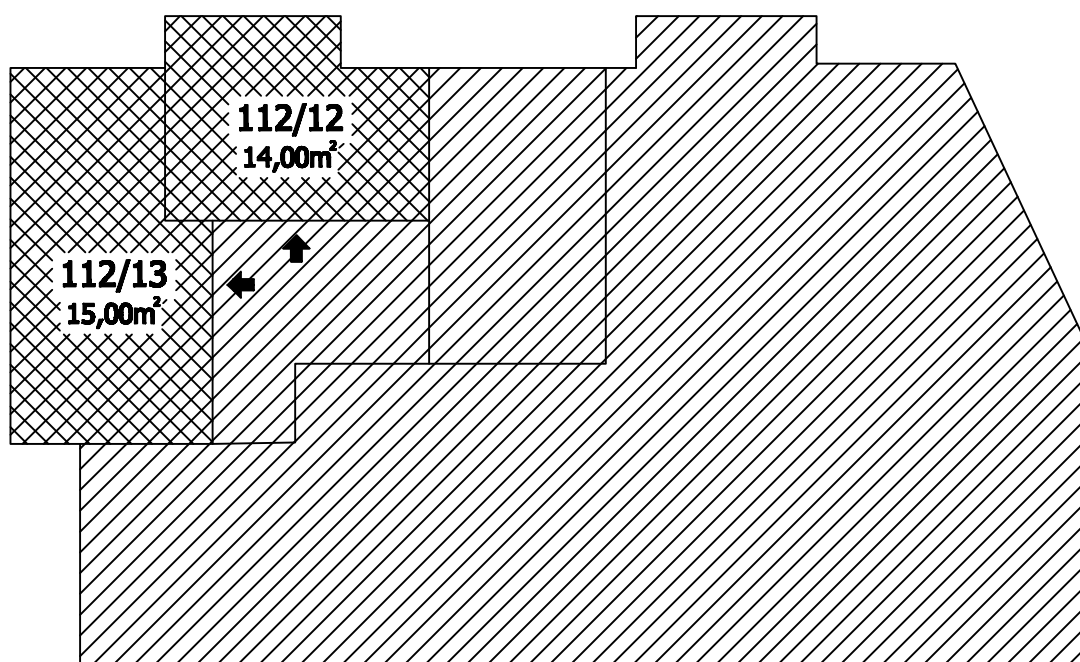


- BALKONY, TERASY

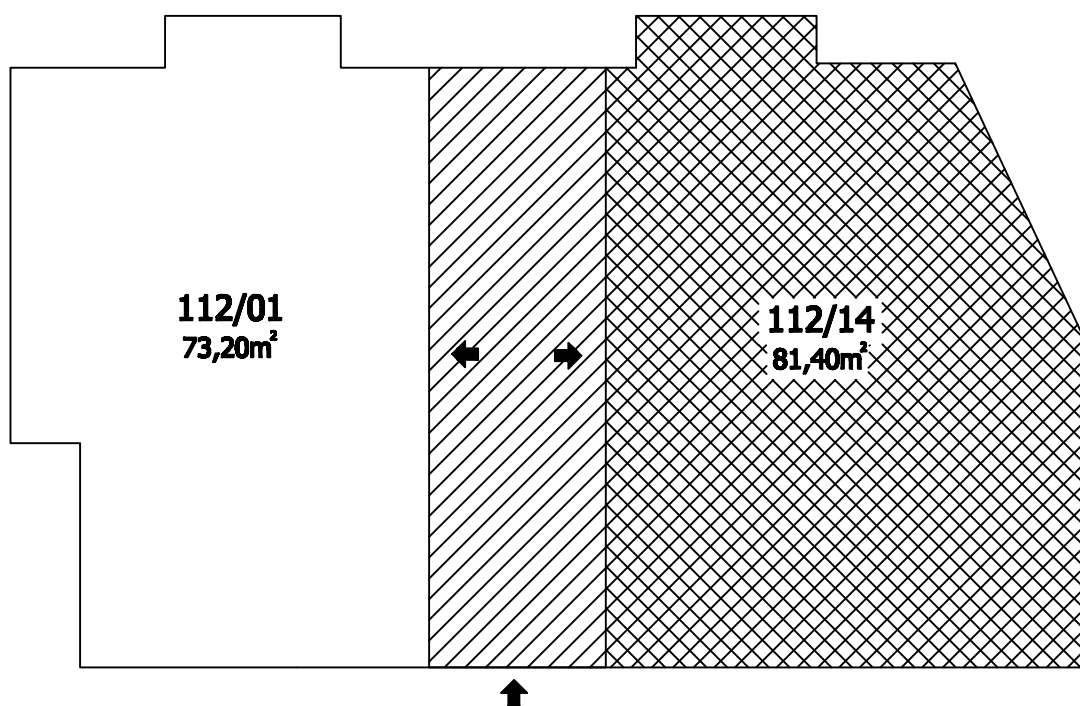


- SPOLEČNÉ PRO DANÉ JEDNOTKY

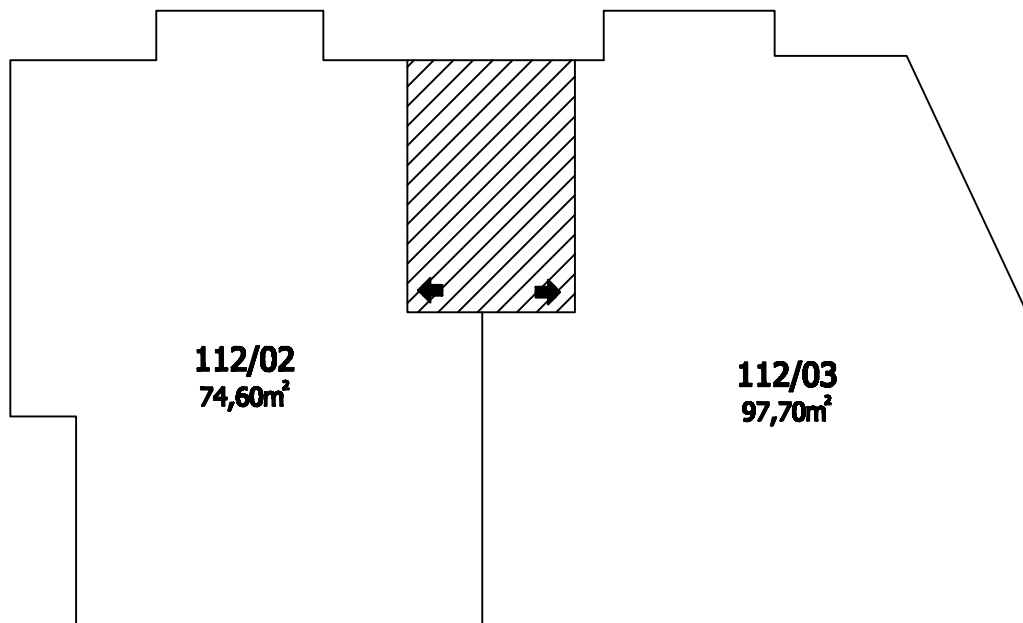
**1.P.P.  
Krymská 4**



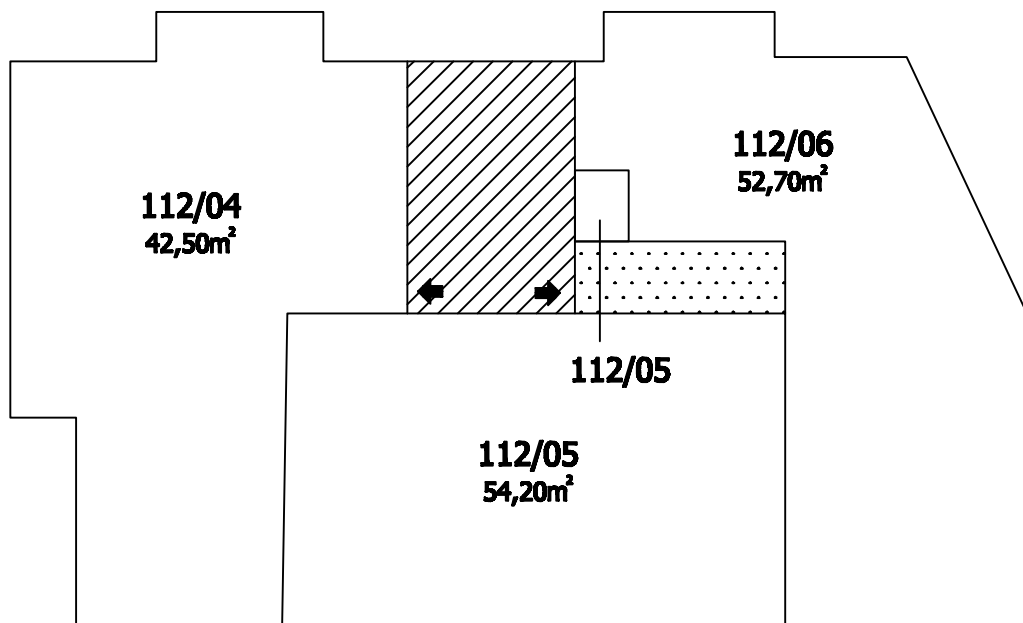
**1.N.P.  
Krymská 4**



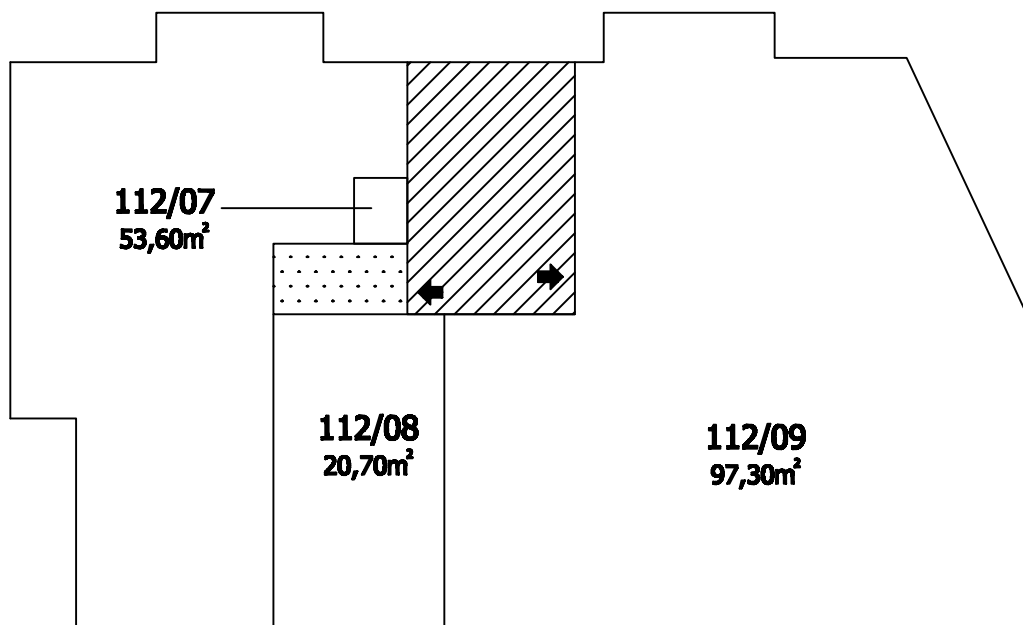
**2.N.P.  
Krymská 4**



**3.N.P.  
Krymská 4**



**4.N.P.  
Krymská 4**



**5.N.P.  
Krymská 4**

